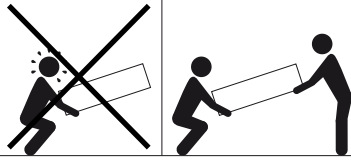


**CAUTION!**

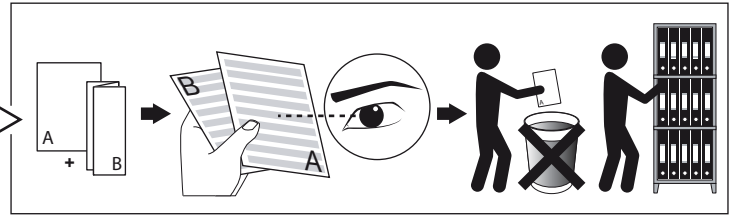
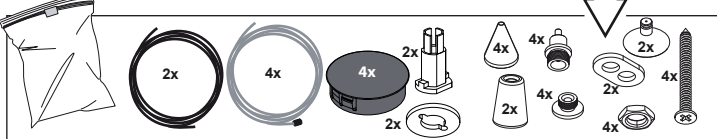


**min. 2 persons needed during installation**

**SUPERNOVA LINE 125 TW  
DOWN-UP DIM5**

DEEL  
PARTIE  
TEIL  
PART  
PARTE  
PARTE

**A**

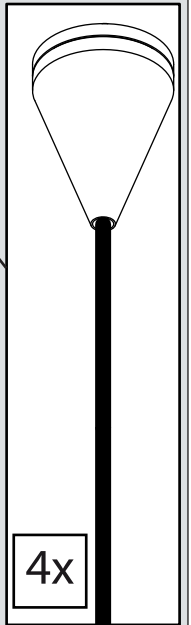
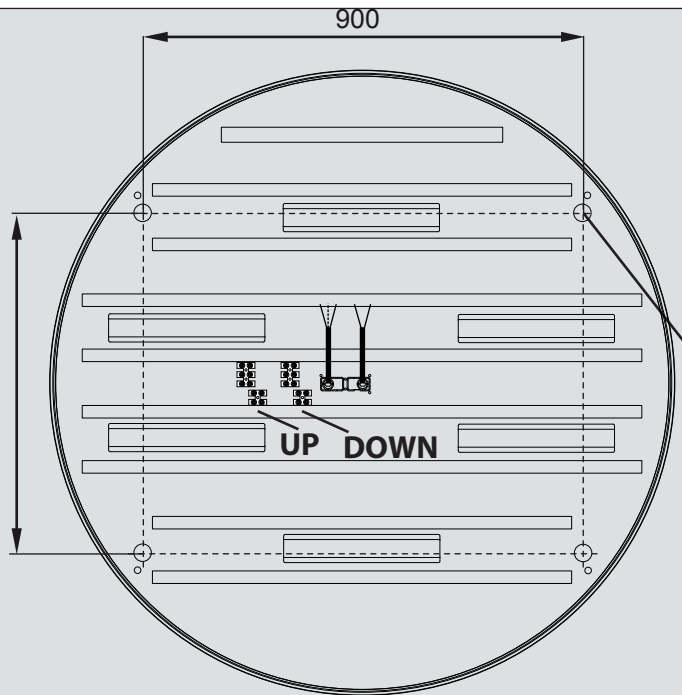


**GROUP ADDRESS "0"** (Power) = 0% ↔ 100%  
**GROUP ADDRESS "1"** (Color) = 2700K ↔ 5700K  
**Methode DT6** (Device Type 6)



**Warm White** 50%  
**Cold White** 50%

**U: 120-277V**



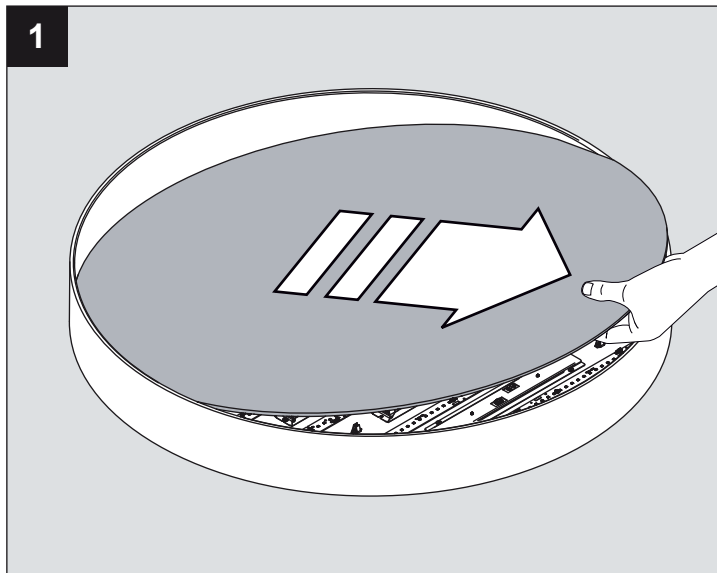
**IP20**

Beschermd tegen vaste voorwerpen die groter zijn dan 12 mm  
Protégé contre les objets solides de plus de 12 mm  
Geschützt gegen Festkörper größer als 12 mm  
Protected against solid objects greater than 12 mm  
Protegido contra objetos sólidos superiores a 12 mm  
Protetto contro oggetti solidi più grandi di 12 mm

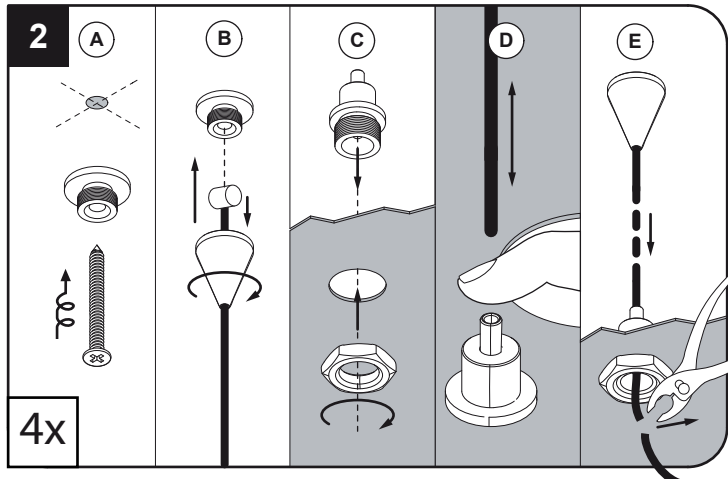


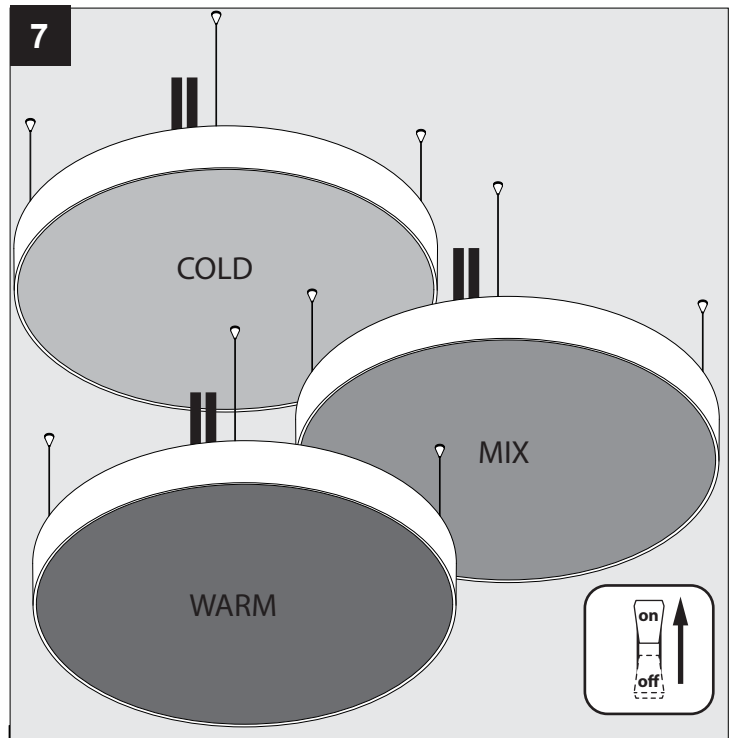
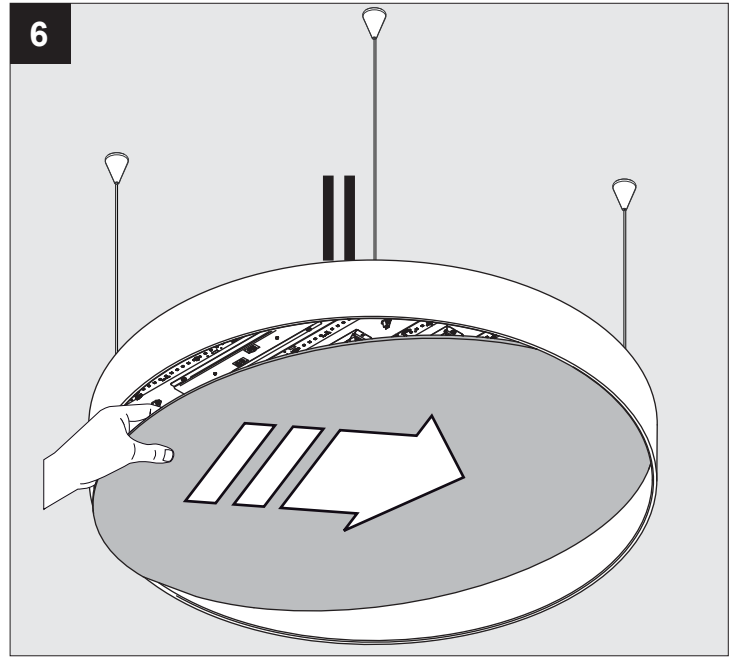
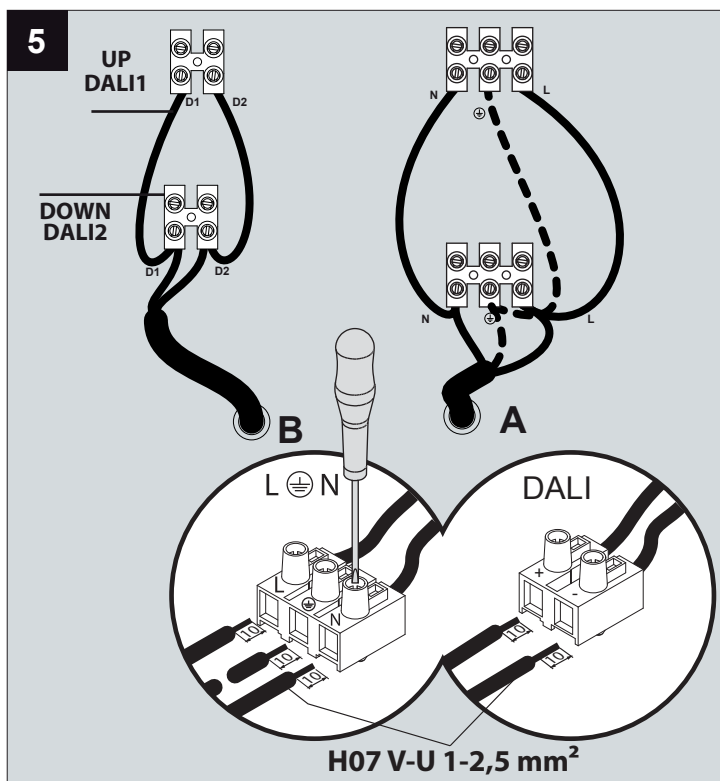
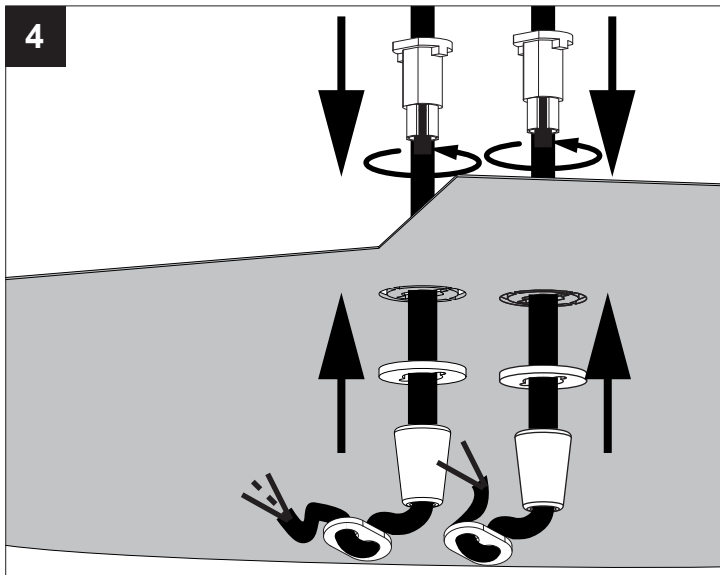
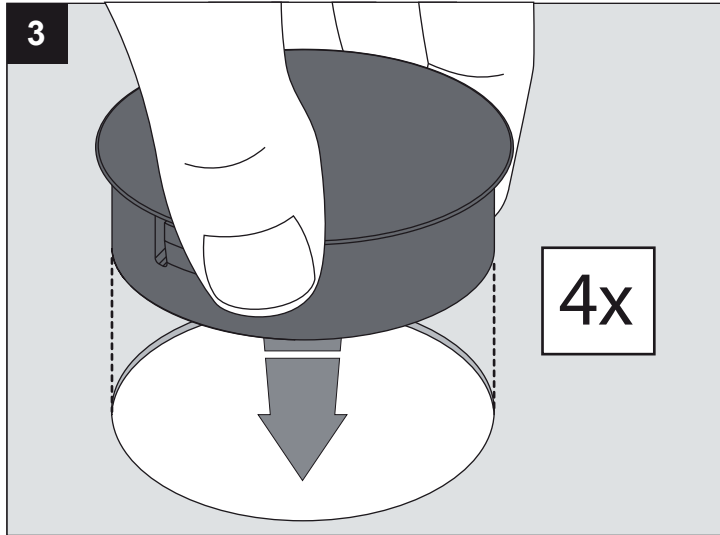
Voorzien van aardingsaansluiting  
Avec mise à la terre  
Ausgerüst tet mit Erdungsanschluss  
Provided with grounding  
Con la toma de tierra  
Con presa a terra

**1**



**2**





fabrikant of door de fabrikant aangestelde installateur vervangen worden.

La source lumière de cet appareil ne sera remplacée que par l'entreprise ou par un agent reconnu.

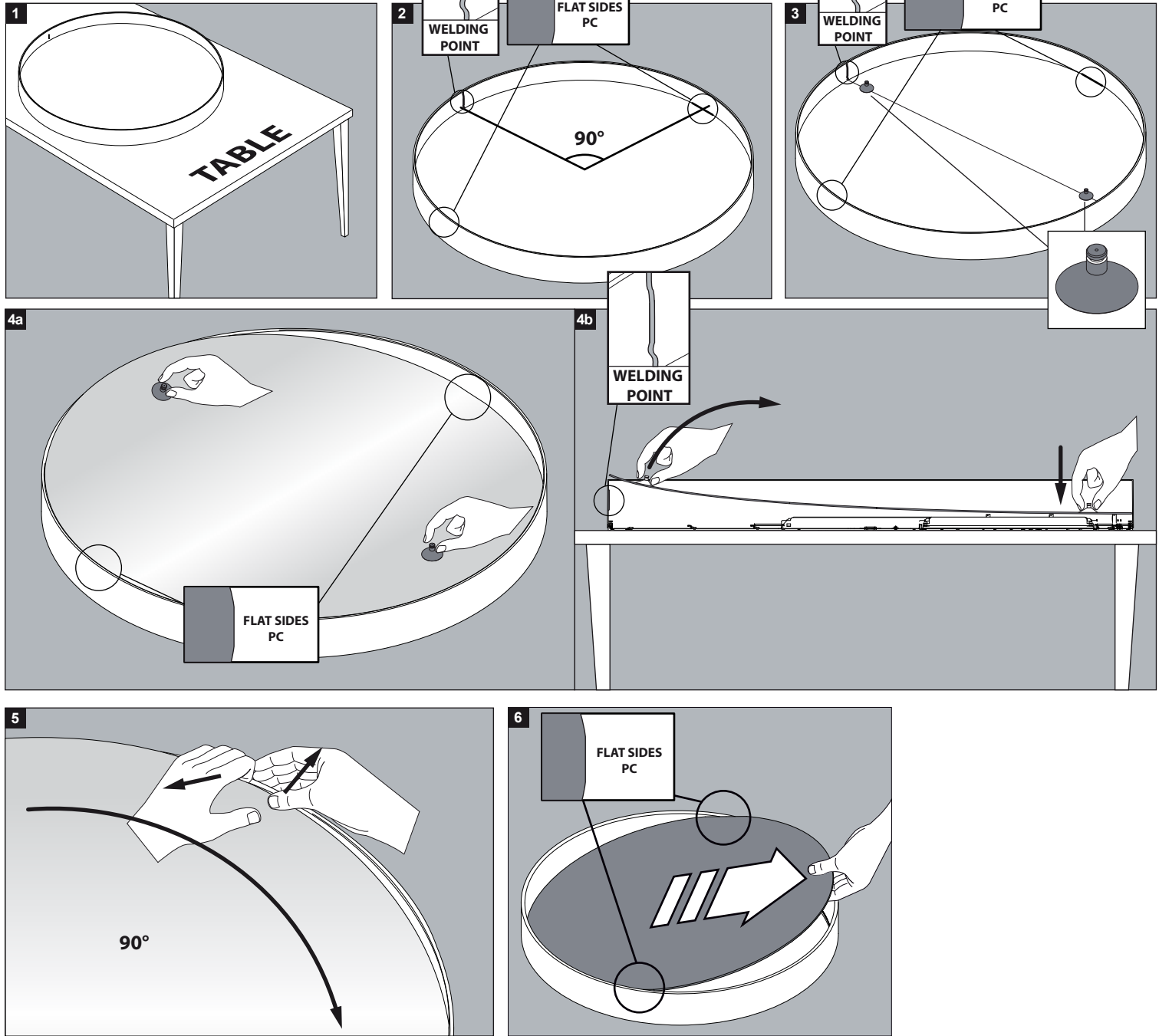
Das enthaltene Leuchtmittel sollte nur durch entsprechendes Fachpersonal ersetzt werden.

The light source contained in this luminaire shall only be replaced by the manufacturer or his service agent.

La fuente de iluminación que tiene esta luminaria sólo puede remplazarse por el fabricante o por un instalador autorizado.

La sorgente luminosa incorporata in questo apparecchio può essere sostituita solo dal produt tore, da un suo centro assistenza oppure da una persona in possesso della necessaria abilitazione.

**HOW TO REMOVE THE LENS?**



**HOW TO PUT THE LENS BACK?**

