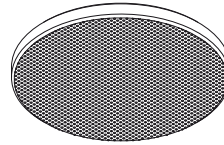
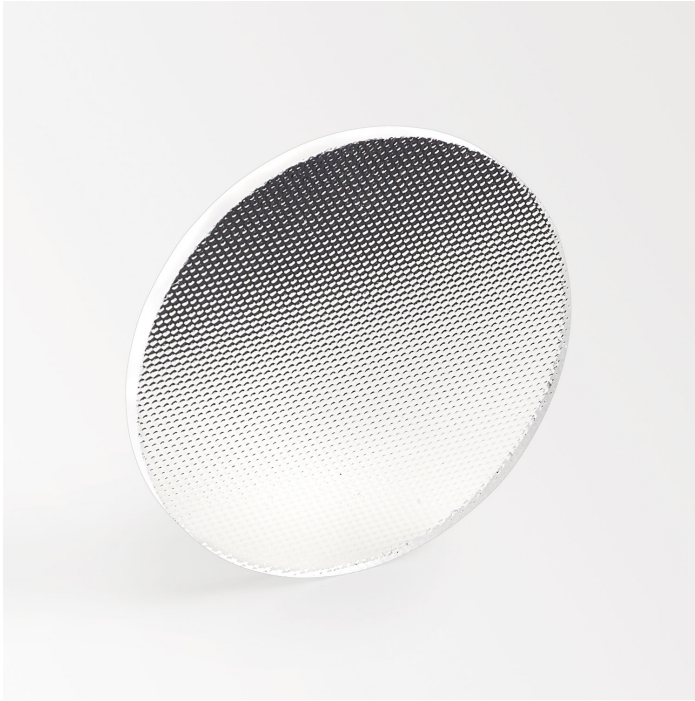


VIZIR SOFTENING LENS

473 03 04



Ø40



[View on website](#)



General info

LOCATION	indoor
WEIGHT (KG)	0.1

For detailed installation instructions, please consult the manual : [473_01_00_HAND.pdf](#)

WHERE USED

418 367 811 922 MDL	SUPERLOOP-VIZIR 92733 MDL
418 367 811 932 MDL	SUPERLOOP-VIZIR 93033 MDL
418 367 821 MDL	SUPERLOOP-VIZIR 82715 MDL
418 367 831 MDL	SUPERLOOP-VIZIR 83015 MDL
418 368 811 922 MDL	SUPERLOOP-HEDRA 92733 MDL
418 368 811 932 MDL	SUPERLOOP-HEDRA 93033 MDL
418 368 821 MDL	SUPERLOOP-HEDRA 82715 MDL
418 368 831 MDL	SUPERLOOP-HEDRA 83015 MDL
473 111 811 922	VIZIR CLIP 92733
473 111 811 932	VIZIR CLIP 93033
473 111 821	VIZIR CLIP 82715
473 111 831	VIZIR CLIP 83015
473 112 811 922	VIZIR L CLIP 92733
473 112 811 932	VIZIR L CLIP 93033
473 131 811 922	VIZIR ON 92733
473 131 811 932	VIZIR ON 93033
473 131 812 922 ED1	VIZIR ON 2 92733 DIM1
473 131 812 932 ED1	VIZIR ON 2 93033 DIM1
473 131 821	VIZIR ON 82715
473 131 831	VIZIR ON 83015
473 132 811 922	VIZIR L ON 92733
473 132 811 932	VIZIR L ON 93033
473 151 821 MDL	M20/M26H - VIZIR 82715 MDL
473 151 831 MDL	M20/M26H - VIZIR 83015 MDL
473 152 811 922 MDL	M20/M26H - VIZIR L 92733 MDL
473 152 811 932 MDL	M20/M26H - VIZIR L 93033 MDL
473 211 811 922	HEDRA CLIP 92733
473 211 811 932	HEDRA CLIP 93033
473 211 821	HEDRA CLIP 82715
473 211 831	HEDRA CLIP 83015
473 212 811 922	HEDRA L CLIP 92733
473 212 811 932	HEDRA L CLIP 93033
473 231 811 922	HEDRA ON 92733

DELTALIGHT

VIZIR SOFTENING LENS

473 03 04

473 231 811 932	HEDRA ON 93033
473 231 812 922 ED1	HEDRA ON 2 92733 DIM1
473 231 812 932 ED1	HEDRA ON 2 93033 DIM1
473 231 821	HEDRA ON 82715
473 231 831	HEDRA ON 83015
473 232 811 922	HEDRA L ON 92733
473 232 811 932	HEDRA L ON 93033
473 251 821 MDL	M20/M26H - HEDRA 82715 MDL
473 251 831 MDL	M20/M26H - HEDRA 83015 MDL
473 252 811 922 MDL	M20/M26H - HEDRA L 92733 MDL
473 252 811 932 MDL	M20/M26H - HEDRA L 93033 MDL
20514 9210	SUPERLOOP-HEDRA 92708 MDL
20514 9310	SUPERLOOP-HEDRA 93008 MDL
20543 9210	SUPERLOOP-VIZIR 92708 MDL
20543 9310	SUPERLOOP-VIZIR 93008 MDL
22519 9210	HEDRA CLIP 92708
22519 9310	HEDRA CLIP 93008
22525 9210	HEDRA ON 92708
22525 9310	HEDRA ON 93008
22528 9210	VIZIR CLIP 92708
22528 9310	VIZIR CLIP 93008
22532 9210	VIZIR ON 92708
22532 9310	VIZIR ON 93008
23246 8210	M26L/M35R - VIZIR 82715 MDL
23246 8310	M26L/M35R - VIZIR 83015 MDL
23246 9210	M26L - VIZIR 92708 MDL
23246 9310	M26L - VIZIR 93008 MDL
23247 8215	M26L/M35R - VIZIR 82715 DIM5
23247 8315	M26L/M35R - VIZIR 83015 DIM5
23247 9215	M26L - VIZIR 92708 DIM5
23247 9315	M26L - VIZIR 93008 DIM5
23248 9220	M26L - VIZIR L 92733 MDL
23248 9320	M26L - VIZIR L 93033 MDL
23249 9225	M26L - VIZIR L 92733 DIM5
23249 9325	M26L - VIZIR L 93033 DIM5
23250 8210	M26L/M35R - HEDRA 82715 MDL
23250 8310	M26L/M35R - HEDRA 83015 MDL
23250 9210	M26L - HEDRA 92708 MDL
23250 9310	M26L - HEDRA 93008 MDL
23251 8215	M26L/M35R - HEDRA 82715 DIM5
23251 8315	M26L/M35R - HEDRA 83015 DIM5
23251 9215	M26L - HEDRA 92708 DIM5
23251 9315	M26L - HEDRA 93008 DIM5
23252 9220	M26L - HEDRA L 92733 MDL
23252 9320	M26L - HEDRA L 93033 MDL
23253 9225	M26L - HEDRA L 92733 DIM5
23253 9325	M26L - HEDRA L 93033 DIM5
23362 9225	M20/M26H - VIZIR L 92733 DIM5
23362 9325	M20/M26H - VIZIR L 93033 DIM5
23363 8215	M20/M26H - HEDRA 82715 DIM5
23363 8315	M20/M26H - HEDRA 83015 DIM5
23363 9215	M20/M26H - HEDRA 92708 DIM5
23363 9315	M20/M26H - HEDRA 93008 DIM5
23364 9225	M20/M26H - HEDRA L 92733 DIM5
23364 9325	M20/M26H - HEDRA L 93033 DIM5
23365 9210	M20/M26H - VIZIR 92708 MDL
23365 9310	M20/M26H - VIZIR 93008 MDL
23366 9210	M20/M26H - HEDRA 92708 MDL
23366 9310	M20/M26H - HEDRA 93008 MDL
23371 8215	M20/M26H - VIZIR 82715 DIM5
23371 8315	M20/M26H - VIZIR 83015 DIM5
23371 9215	M20/M26H - VIZIR 92708 DIM5
23371 9315	M20/M26H - VIZIR 93008 DIM5
24914 9220	FINTO - HEDRA 92733 MDL
24914 9320	FINTO - HEDRA 93033 MDL
27018 9220	FNT II - HEDRA 92733 MDL
27018 9320	FNT II - HEDRA 93033 MDL
27019 9225	FNT II - HEDRA 92733 DIM5
27019 9325	FNT II - HEDRA 93033 DIM5

DELTALIGHT

VIZIR SOFTENING LENS

473 03 04

Notes: